

# COVERS & PULLERS

## COVERS:

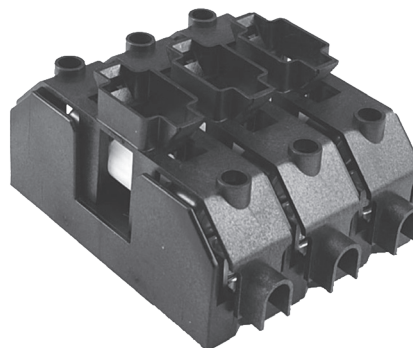
UL listed accessories under file no. JDVS2.E181825

Opening allows view of self-indicating fuses

Holes for test probes and re-tightening of wire terminations

Provides IP20 (touchsafe) protection per IEC 60529 (30A & 60A models)

RoHS compliant



Fuse Holder shown with covers attached

FUSE TYPE	AMPS	VOLTAGE	CATALOG #	FOR USE WITH FUSE HOLDER #	IP20 (FINGER SAFE)*
H/R	30	250	CHR230	F30A / R30A	Yes
H/R	60	250	CHR260	F60A / R60A	Yes
H/R	100	250	CHR2100	RF100A / R100A	Yes
H/R	30	600	CHR630	6F30A / 6R30A	Yes
H/R	60	600	CHR660	6F60A / 6R60A	Yes
H/R	100	600	CHR6100	R6F100A / 6R100A	Yes
J	30	600	CJ630	6J30A	Yes
J	60	600	CJ660	6J60A	Yes
J	100	600	CJ6100-1C	R6J100A	No
J	100	600	CJ6100-2C	R6J100A	No
J	100	600	CJ6100-3C	R6J100A	No
CC, G	30	600	CC630	6CC30A	Yes
CD	60	600	CC660	R6CC60A	Yes
MISC	30	600	CCM630**	6M30A / 6CCM30A	Yes

\*Applications involving fuse holders other than Marathon may not provide IP20 finger protection

\*\*Covers are recognized if used with recognized fuses

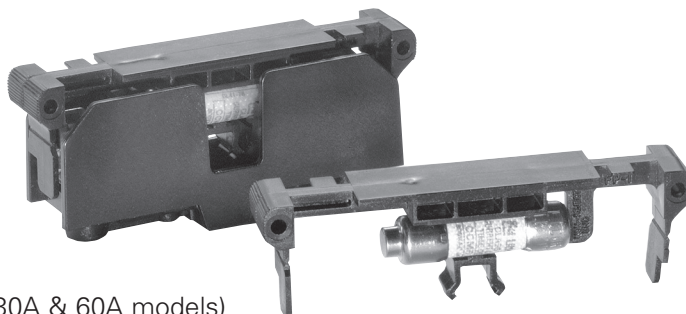
## COVER-PULLER (CATALOG # CVR-MCC):

For use with

- Class CC (30 amp)
- Midget , 10 x 38 (30 amp)
- Class G (15 & 20 amp only)

Provides IP20 (touchsafe) protection per IEC 60529 (30A & 60A models)

RoHS compliant



# DIN RAIL ADAPTERS

## DIN RAIL ADAPTERS:

Secures product on DIN rail  
Wide end use temperature range  
RoHS compliant

COMPATIBLE PRODUCTS	PART #	DIN R 1	DIN R 2
TERMINAL BLOCKS	985 Series	✓	
	1100 Series	✓	
	1200 Series	✓	
	1500 Series	✓	
	1600 Series	✓	
FUSE HOLDERS	2 & 3 Pole Class H	✓	
	2 & 3 Pole Class R	✓	
	Class CC		✓
	Midget		✓
	Class G		✓

USE A #8 SELF TAPPING SCREW FOR MOUNTING COMPONENT



### DIN R 1 ASSEMBLY METHOD:

Press adapter onto rail, fasten component with #8 self tapping screw (screw not supplied).

Assembly locks firmly on to DIN rail.

### DIN R 2 ASSEMBLY METHOD:

DIN R 2 snaps securely to the Marathon® fuse holders and to DIN rails without tools, which permits the fuse holders to be mounted directly to standard and low profile 35mm symmetrical and 32mm asymmetrical DIN rails.

May be removed by lifting the disconnect tab.

